



Kitchen & Bathroom

HIA-The Laminex Group

Attention to detail

JOSEPHINE ALLISON

This week we continue our entries for this year's Kitchen & Bathroom Awards. The entries feature the innovative and stylish kitchens and bathrooms in a wide range of homes including display homes such as Jaxon Homes' The Newport, Webb & Brown-Neaves' The Boulevard and Rural Building Co's Bushland Retreat 2005. Also covered is Dale Alcock's The Ashgrove, Ventura Homes' The Riviera, Ross North Homes' The Metro and Oswald Homes' The Carnac. The entries reflect the quality and attention to detail given by designers and builders of two much-used areas, which are the hub of the house for most families. These rooms always create interest and these days there is virtually no limit to the expertise and cutting-edge design involved.



Category: Best Kitchen in a Display Home \$300,001 and Over

COMPANY: WEBB & BROWN-NEAVES.

DISPLAY HOME: THE BOULEVARDE.

The builder wanted a kitchen designed to complement the sleek architecture of the house.

It had to remain functional when the Boulevard was no longer a display home. Aluminium accents, stainless-steel appliances, trendy high-gloss vinyl and stone created a contemporary design featuring modern materials. A big island bench sits alongside a spacious family and dining room.

Extensive benchtops allow the kitchen to be used for food preparation, cooking and dining.



Categories: Best Kitchen in a Display Home \$300,001 and Over; Best Ensuite in a Display Home \$300,001 and Over

COMPANY: JAXON HOMES. DISPLAY HOME: THE NEWPORT. ATWELL.

This Newport kitchen is a cook's delight with a 900mm-wide Smeg gas upright stove with six-burner cooktop, a 900mm canopy range hood and Smeg stainless-steel splashback.

There is ample storage with underbench cupboards, pot drawers and overhead cabinets. An appliance

cupboard has bi-fold doors. Stone benchtops and glass splashbacks add sophistication.

Two stainless-steel round sinks are inset in the island bench. There is a flick mixer tap, breakfast bar and built-in wine rack. The kitchen overlooks the living areas and the dining room is

adjacent for easy access. The equally stylish ensuite is spacious without being wasteful and has a big shower, full-sized bath and separate toilet.

Two 1m-high bevelled-edge mirrors span his-and-her vanities which have semi-recessed basins, a stone top and drawers and cupboards with handles.





Kitchen & Bathroom Awards 2006

HIA-The Laminex Group

Innovative style in homes of the west

Categories: Best Kitchen in a Display Home \$200,001-\$300,000; Best Ensuite in a Display Home \$200,001-\$300,000

COMPANY: RURAL BUILDING CO.
DISPLAY HOME: THE BUSHLAND RETREAT 2005.

The kitchen was designed to keep the

cook in close contact with guests.

It has overhead cabinets, appliance cupboards, top-of-the-range appliances, underslung sinks, a downdraft exhaust and Corian benchtops.

Bathroom: A unique layout allows the ensuite to be quite private but still open to the main bedroom. A slit between the wall concealing the basins allows generous airflow.





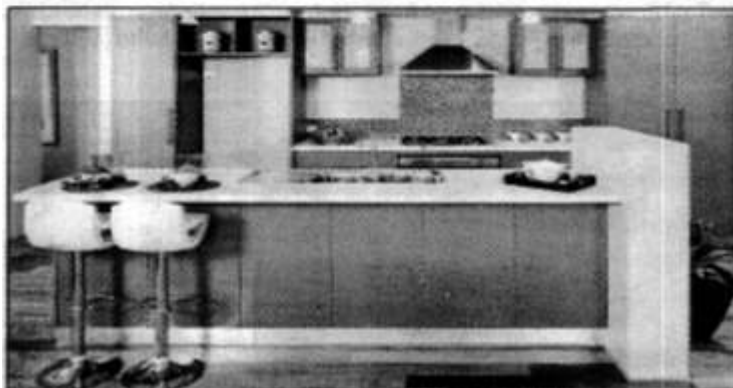
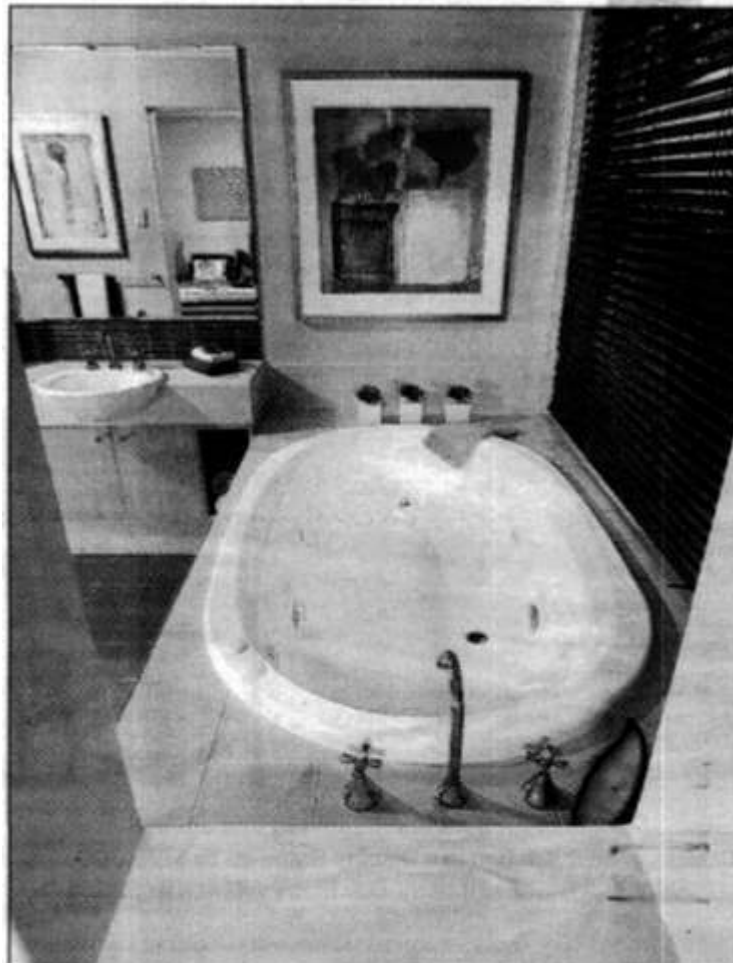
Categories: Best Kitchen in a Display Home \$200,001-\$300,000; Best Ensuite in a Display Home \$200,001-\$300,000

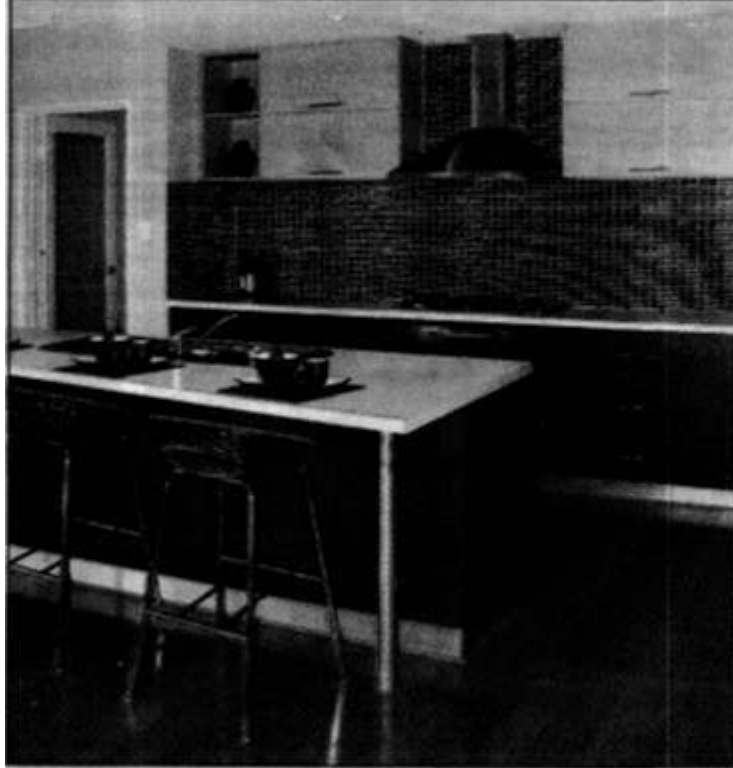
COMPANY: DALE ALCOCK HOMES. DISPLAY HOME: THE ASHGROVE, ASHBY.

The design of this gourmet kitchen works on simplicity with modern lines including a laminated boxed upstand at the end of the island bench.

The kitchen has a dishwasher and microwave recess, underbench oven and hotplate. Cupboards include wide pot drawers, a laminated pantry and frosted glass overhead cabinets. There is space for side-by-side fridges with an optional broom closet included.

Bathroom: There is a his-and-her spa and an ensuite with double semi-recessed basins. Cupboards include wide drawers in the centre and open shelves.





Category: Best Kitchen in a Display Home up to \$175,000
COMPANY: ROSS NORTH HOMES. DISPLAY HOME: THE METRO,
SOUTHERN RIVER.

An angled island bench highlights this kitchen which also has downlights and a ceiling bulkhead.

Speckled beige square-form benchtops and storm grey cupboards include unusual lift-up doors. A different note is a ceiling height splashback of metallic dark-grey mosaics.



Category: Best Kitchen in a Display Home up to \$175,000

COMPANY: COASTLINE KITCHENS. BUILDER: WA COUNTRY BUILDERS.

Pale mauve and beige doors set against stainless steel highlight this kitchen in a display home at Northam.

The kitchen has been designed for easy interaction with generous bench and cupboard space. Frosted-glass, panelled cabinets are installed overhead and there is a breakfast bar in one corner.



Categories: Best Kitchen in a Display Home \$200,001-\$300,000; Best Ensuite in a Display Home \$200,001-\$300,000

COMPANY: VENTURA HOMES. DISPLAY HOME: THE RIVIERA.

This kitchen has stainless-steel appliances and generous bench space.

It overlooks the meals and alfresco areas, creating generous space for serving meals.

Bathroom: A luxury corner bath and twin vanity highlight this ensuite. Modern laminate colours, semi-recessed basins and a semi-frameless pivot-door shower complement each other. Border tiles are set around the bath and below vanity mirrors.

